

DAWG SCRIPTS

UNIVERSITY OF WASHINGTON
PHARMACY ALUMNI ASSOCIATION AND SCHOOL OF PHARMACY NEWS

FALL 2009

Speaking Out on Behalf of Pharmacists

Clinical Professor of Pharmacy Don Downing and Associate Professor of Pharmacy Peggy Odegard recently wrote an editorial for the Bellingham Herald advocating for pharmacists' role in health care reform. It is excerpted here:

Considering that more than \$177 billion is spent annually in the United States on avoidable medication-related health problems, one might think our health care system would value pharmacists' services enough to pay for them. But almost exclusively, they are only paid to sell more medications — not for their routine work identifying and resolving medication-related risks.

As discussions of health care reform take place, it is time for pharmacists to start being recognized — and reimbursed — for the services they provide. Reform talks are currently placing emphasis on the importance of preventing disease, improving health outcomes and employing cost-saving measures.

All of these have long been priorities for pharmacists.

In addition to dispensing medicines that cure illnesses and improve health, pharmacists provide education about medicines, help people manage and adhere to complex regimens, ensure

Continued on Page 5



"It's a lot of fun when you have a business that's doing well," said Pharmacist Craig Kvam about his compounding pharmacy in Poulsbo, Wash. "We have a good crew right now that makes each day fun." His pharmacy crew is pictured here. Standing, from left: Pharmacy Technician and Craig's wife, Sally Kvam, Technician Kris Makela, Pharmacist Michelle Lawhorn, Craig Kvam, Technician Mila Wright and Technician Gail King. Seated: Technician Deb Bachman. (Photo by Marsha Wright)

Compounding New Solutions

Craig Kvam, '72, didn't know his decision to turn his traditional pharmacy into a compounding pharmacy in 1988 would change the way he felt about his profession. It was, after all, a simple business decision. It had become too hard to sustain his pharmacy in the small town of Poulsbo on Washington's Kitsap Peninsula amid rising operational costs and increasing competition. He needed to choose a niche.

Choosing compounding did more than keep Kvam's business successful; it instilled in him a deeper appreciation for his chosen line of work.

"Compounding opened my eyes to the need for the kinds of pharmacy

services that couldn't be done in traditional pharmacy," he said. "And I loved it from the very beginning."

In the field of compounding, pharmacists create medications unique to the needs of each patient. People turn to compounding pharmacists when they require a form of medication that isn't commercially available — if they're allergic to certain drug ingredients or if their medication has been discontinued, for example.

Pharmacies such as Kvam's Poulsbo Compounding Pharmacy often help the patients that no one else can. For instance, an entire family was recently referred to Poulsbo Compounding

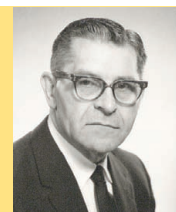
Continued on Page 13



Special Section:
Recognizing
Our Donors
Page 6



Alumni & Friends
Out & About
Page 12



Tribute to
Professor Emeritus
Alain Huitric
Page 16

PRESIDENT'S MESSAGE



Pharmacy Alumni Association
Box 354699
Seattle, WA 98195
T: (206) 221-2465
F: (206) 221-2689
rxalumni@uw.edu
depts.washington.edu/rxalumni

PAA OFFICERS

President: Ben Michaels, '97
President-Elect: Jenny Arnold, '06
Past President: Suzanne Lee, '01

PAA COMMITTEE LEADERS

Katterman: Don Downing, '75
WSPA: Jeff Rochon, '99

DAWG SCRIPTS

Editor: Melinda Young

Contributors: Thomas A. Baillie,
Claire Forster, Nancy Hart, Ben
Michaels, Maria Tran

CONTACT US

rxalumni@uw.edu
(206) 221-2465

COMMENTS AND UPDATES

We are always interested in your
comments, updates and story
ideas. Please e-mail us at
rxalumni@uw.edu.

School of Pharmacy
www.pharmacy.washington.edu

University of Washington
www.washington.edu

*This paper was made with 30-
percent post-consumer waste
and manufactured in the
Pacific Northwest.*



I always get excited about the fall. The weather cools off and Husky football begins. This fall is especially exciting for me personally as my wife and I are expecting our first child soon.

This autumn also marks a change for the Pharmacy Alumni Association. Jenny Arnold (Riddell), '06, the director of pharmacy practice development at the Washington State Pharmacy Association (WSPA), will soon become the new PAA president. Jenny is extremely enthusiastic about our profession. She has been an important voice on the board and will do an excellent job continuing our efforts to provide alumni with a first-rate association. We hope you can join us in

officially welcoming her as the new president at next month's PAA Homecoming event.

As Jenny takes over, the PAA will have an opening for president-elect. Please e-mail rxalumni@uw.edu if you are interested in joining the board. It is an excellent opportunity.

In fact, I'd like to reflect on just what a great opportunity it has been for me. When I joined the board, one of our goals was to better connect with alumni. One way we did this was by enhancing our partnership with the WSPA. This has allowed me to become more active in that organization and to meet more members of the pharmacy community.

We also created a Facebook group. [Search for "Pharmacy Alumni Association" to join.] Through this group, I have reconnected with several classmates, and I now stay regularly up-to-date about current news and happenings at the School.

The effort I am most proud of being involved in, though, is the creation of the PAA scholarship. This need-based scholarship is made possible through donations that our members make when they renew their memberships. And the PAA will be able to give its first-ever scholarship to a pharmacy student this year!

Throughout my time on the board, I've developed a deeper sense of pride in my fellow alumni and in our profession. Further, my respect for the School of Pharmacy increases each time I meet another student who demonstrates such excellence and professionalism.

In closing, I want to acknowledge the staff of the Office of Advancement at the School. They take our ideas and put them into action. They have also worked diligently to keep PAA's budget balanced while also increasing our presence at pharmacy association conventions. So to Maria, Melinda, Mariely and Claire, I would like to say thank you.

It has been such a pleasure being the PAA president. Go Dawgs!

Ben Michaels, '97
President, Pharmacy Alumni Association

Upcoming School of Pharmacy and Industry Events

October 23
Classes of 1968 & 1969
Reunion
Ivar's Salmon House
7 p.m.
Contact: Nancy Hart
(206) 616-7613
rxevents@uw.edu

October 24
PAA Homecoming Lunch
I-Court Rotunda, Health
Sciences Building
Begins 2 hours before kick-off
Contact: Nancy Hart
(206) 616-7613
rxevents@uw.edu

October 28
Pharmacy Career & Residency
Information Day
UW South Campus Center
10 a.m. to 3 p.m.
Contact: Mary Neyhart
mneyhart@uw.edu

November 6 & 7
Washington State Pharmacy
Association Annual Meeting
Tulalip Convention Center
Resort and Spa
Visit www.wsparx.org for more
information and to register

MESSAGE FROM THE DEAN



These are rapidly changing times for pharmacy. In academic pharmacy, we continue to face a historically challenging budget situation. In the field, practitioners are preparing for another possible H1N1 Swine flu pandemic while also grappling with how Medicaid reimbursement reform could affect patient safety and their bottom

lines. Then there's a development poised to impact all of pharmacy and pharmaceutical sciences — the potential major overhaul of the U.S. health care system.

In times such as these, our School's commitment to thinking ahead and being prepared becomes even more essential. One way we keep that commitment is by providing our graduates with the tools necessary to respond to pressing issues in pharmacy.

Our list of health care priorities is long and wide-ranging. Our approach to preparing students for them is comprehensive. Take, for example, the issue of aging. Pharmacists and pharmaceutical scientists are being significantly impacted by the aging Baby Boomers and their increasing demand for medications and for pharmacy and health care services.

The UW School of Pharmacy has long made it a priority to meet the growing needs of seniors. Our nationally renowned geriatric pharmacy program was officially created with the foresight of Professor of Pharmacy Joy Plein and her late husband and Professor of Pharmacy, Elmer, in 1985 (although it's worth noting that the School had been offering geriatric pharmacy classes long before that). Its primary goals are to enhance education, research and service in support of appropriate medication use in older adults.

Over the years, it has made education and training in geriatric pharmacy available to countless pharmacy students and practitioners, more than 240 of whom have completed

the Plein Certificate in Geriatric Pharmacy. Further, the program helped lay the groundwork for an important new educational direction in our School. Starting this academic year, geriatric content will be threaded throughout the core curriculum for all Pharm.D. students.

Beyond the classroom, our medication-therapy-management (MTM) program, UW Pharmacy Cares, is providing hands-on training in geriatric pharmacy to our students. Last year, a group of pharmacy faculty created this unique program, in part, to meet the growing MTM demands of seniors. Today, the faculty-pharmacists in UW Pharmacy Cares are providing MTM consultations and services to five to ten patients weekly.

The program's student trainees are receiving indispensable first-hand insight into the complicated medication and health needs of seniors. Perhaps most important, they are getting essential experience helping real people.

In addition, our School is currently in discussions with the UW Schools of Social Work and Nursing and with key community and university leaders to assess additional ways we can respond to the needs of the aging population. Together, we hope to provide a strong collaborative and innovative care model that advocates for seniors and their families in all aspects of living, health and well-being.

So as you can see, we leave no stone unturned when it comes to being prepared for the major issues affecting the pharmacy profession. We would not be able to take this kind of broad approach without the support of our donors.

We recognize our donors on Pages 6 to 11 of this *Dawg Scripts*. I'd like to offer a personal thank you for your investment in us — especially during these uncertain times. We remain devoted to using your investment wisely and to improving the future of the pharmacy profession.

A handwritten signature in black ink, which appears to read "Thomas A. Baillie". The signature is fluid and cursive, with a long horizontal line extending to the right.

Thomas A. Baillie, Ph.D., D.Sc.
Dean, UW School of Pharmacy

UW's MTM Pharmacy Is At Your Service!

The School of Pharmacy's medication-therapy-management (MTM) pharmacy, UW Pharmacy Cares, continues to partner with community pharmacies upon request. Our faculty-pharmacists can assist you in one of the following ways:

- *Offering a consultation to answer questions about setting up an MTM service
- *Helping you fill the service gap for MTM requests at your pharmacy
- *Guiding you in the creation of your own MTM program

Please contact us toll free at (866) 577-1915 or visit www.uwpharmacycares.com for more information.

For Students, Breaking Down Complex Drug Has Its Rewards

This past spring, four UW pharmacy students participated in the Academy of Managed Care Pharmacy (AMCP) Pharmacy and Therapeutics (P&T) Student Competition. They analyzed a drug, presented their findings and made their recommendations to a mock P&T committee at the AMCP annual meeting in Orlando, Fla.

The team — Jessica Chao, Erin Cutter, Shannon Duke and Ellen Maddox, all third-years at the time — won first place. They defeated teams from the University of California-San Francisco, Drake University and the University of Maryland, among others.

All the teams analyzed Tysabri, a



From left: Tapan Patel from sanofi-aventis; Cynthia Pigg from the Foundation of Managed Care Pharmacy; students Ellen Maddox, Shannon Duke, Jessica Chao and Erin Cutter; Shawn Burke from AMCP; Fred Segó, '82, UW AMCP Chapter adviser (Photo courtesy of Premera Blue Cross of Washington)

new medication that treats Multiple Sclerosis and Crohn's Disease.

"This was probably the most complex drug that has ever been analyzed in the competition," said John Watkins, pharmacy manager for formulary development at Premera Blue Cross

of Washington and a UW affiliate associate professor of pharmacy. Watkins was also a team adviser who helped the students form an AMCP student chapter at the UW.

"Tysabri is a biologic drug that treats two completely different, complex diseases — diseases that the students weren't fully familiar with."

So, before the competition, they set out to become familiar with those diseases and the drug. The group analyzed the drug's dossier — which included

Continued on Page 15

Student News



Katie Gries, Jonathan Watanabe, Rafael Alfonso and Eldon Spackman at the ISPOR Student Research Competition

Rafael Alfonso, Katie Gries, Eldon Spackman and Jonathan Watanabe, all graduate students in the Pharmaceutical Outcomes Research and Policy Program, took third place at the International Society of Pharmacoeconomics and Outcomes Research (ISPOR) Student Research Competition in Orlando, Fla., this past May. It was the first time the UW entered this competition.

Andrew Berry, '10 (with his faculty mentor, Clinical Assistant Professor of Pharmacy Jennifer Danielson), and

Abby Frye, '10 (with her faculty mentor, Associate Dean of Academic and Student Programs Nanci Murphy) received 2009 American Association of Colleges of Pharmacy (AACP)/Wal-Mart student-faculty scholarships to attend the AACP annual meeting and teachers seminar in Boston in July.

Andrew Berry, '10, Nicole Even, '09, and Megan Roseman, '09, were invited to present posters at the AACP annual meeting.

Alisha Fewins, '11, Zsolt Hepp, '12, Dana Ling, '11, and Rachel Merrill, '11, comprised a team of UW students that was named a finalist in the Pruitt-Schutte Business Plan Competition, sponsored by the National Community Pharmacists Association (NCPA). The team will compete for first place against teams from the University of Arizona and the University of Georgia at the NCPA annual convention in October.

Joong Kim, '13, won the Best Student Poster Competition at the American College of Clinical Pharmacy

International Congress in April in Orlando, Fla. Professor of Pharmacy Mary Hebert was her faculty mentor.

Eldon Spackman, Ph.D. candidate in the Pharmaceutical Outcomes Research and Policy Program, has been awarded a \$6,000 American Foundation for Pharmaceutical Education predoctoral fellowship for the academic year.



Michelle Wahlin

Michelle Wahlin, graduate student in medicinal chemistry, has written a book about the history of Sigma Delta Epsilon-Graduate Women in Science (GWIS). Michelle's book, *87th Year History*, chronicles GWIS's colorful

story. Michelle was recruited to write the book by the GWIS via the University of San Diego's Department of Chemistry Chair, Dr. Tammy Dwyer.

Speaking Out on Behalf of Pharmacists (Continued from front page)

drug safety, avert dangerous drug interactions, prevent overmedication, offer immunizations and screenings, advocate for access to medications and provide extensive health resources and educational services to the public. The practice of pharmacy involves so much more than merely counting pills.

Furthermore, these services are offered in community pharmacies, clinics, hospitals and nursing homes nationwide. In fact, 92 percent of Americans live within five miles of a community pharmacy.

No other provider offers this level of accessibility. As such, pharmacists

must be recognized for the significant contributions they make to their communities, to the public's health and to the entire health care system.

Economically, it makes sense to compensate pharmacists for providing crucial health services — especially when they are preventing dangerous drug interactions or unnecessary hospitalizations. Ethically, it makes sense to value the role they play in preventing accidental, drug-related deaths. Fundamentally, it makes sense to discontinue the archaic system of financially rewarding pharmacists only when they sell a product and not

when they promote health or identify a medication risk.

We support the kind of health care reform that reinforces pharmacists' efforts to provide these vital services to the public. Pharmacists make an essential contribution to improving health outcomes and improving medication safety. It is time for the health care paradigm to shift to a model fully recognizing and integrating their broad expertise. 🌐

Read this Bellingham Herald guest column in its entirety at www.bellinghamherald.com/311/story/1004902.html.

School and Faculty News

The UW School of Pharmacy now ranks No. 1 in percentage of Pharm.D. faculty with NIH funding and No. 6 in total grant funding.

The School of Pharmacy's Pharm.D. program has had its accreditation status continued by the Accreditation Council for Pharmacy Education through June 2014.

The UW's Obstetric-Fetal Pharmacology Research Unit, led by Professor of Pharmacy **Mary Hebert**, has had its grant extended for five more years.

Bill Atkins, professor of medicinal chemistry, served as Interim Chair of the Department of Medicinal Chemistry while Chair Allan Rettie was on sabbatical this past summer.

Thomas A. Baillie, dean of the School of Pharmacy, has received an award from the International Isotope Society for distinguished service to the Society. This prominent lifetime achievement award is given out every three years.

Larry Bauer, professor of pharmacy, recently published the second edition of *Applied Clinical*

Pharmacokinetics, which updates the first edition of his text that was published in 2001. Additionally, Bauer co-authored the first of a series of studies examining the neuroprotective properties of Erythropoietin in the journal *Pediatrics*.

Rodney Ho, Milo Gibaldi endowed professor of pharmaceuticals, received a Technology Gap Innovation Fund grant from the UW and the Washington Research Foundation. The grant was for his project, "Gd-nanoparticles as high performance magnetic resonance contrast media."

Srikanth Kadiyala, assistant professor of pharmacy, received a best new investigator poster research presentation award at the International Society of Pharmacoeconomics

and Outcomes Research international meeting. He collaborated with Erin Strumpf at McGill University on his presentation.



Jeannine McCune

Jeannine McCune, associate professor of pharmacy, has accepted an invitation from the National Institutes of Health

Department of Health and Human Services to serve as a member of its Developmental Therapeutics Study Section, Center for Scientific Review.

Nanci Murphy, associate dean of academic and student programs, received the AACP Teacher of the Year Award. This stemmed from the Gibaldi Excellence in Teaching Award she received from the UW School of Pharmacy Class of 2009.

Scott Ramsey, adjunct professor in the Pharmaceutical Outcomes Research and Policy Program and a director at Fred Hutchinson Cancer Research Center, has been elected president of the International Society for Pharmacoeconomics and Outcomes Research.



A Special Thank You to Our Alumni and Friends

Although there are signs that the financial markets could finally be stabilizing, the economic crisis of this past year has nevertheless done its damage. Higher education in Washington state was hit particularly hard. We endured painful budget cuts across the University of Washington as the state legislature tried to make up for a multibillion-dollar budget shortfall.

We are keenly aware that the economic situation has impacted each of you, too. So we are especially grateful for the continued support

We are especially grateful for the continued support you have demonstrated for our School throughout this challenging time.

you have demonstrated for our School throughout this challenging time. It is humbling to note that, during the past fiscal year, our School once again had the highest percentage of alumni who gave back than any other unit at the University of Washington.

We cannot thank you enough.

Your gifts to students enable them to continue gaining recognition and making a difference through their wide-ranging outreach, research and academic pursuits. Your gifts to faculty allow them to continue: enhancing educational initiatives; conducting research that's important to human health; and creating vital community-health and outreach programs. And your gifts to our discretionary funds give us the much-needed flexibility to support our most-pressing needs.

We also would like to take this

opportunity to acknowledge those of you who support the School in so many other ways — as volunteers, preceptors, advisers, board members, guest lecturers, business partners and as ambassadors. Your devotion is remarkable, and it inspires us to be better and stronger at what we do.

On the following pages, we recognize the generous financial contributions of our amazing alumni and friends. On behalf of all the faculty, students and staff of the UW School of Pharmacy, thank you. You make us proud. We intend to keep doing our part to make you proud in return. ☺

PHOTOS: Top left: Don and Marla Kojima. Center: Student Luis Ramos, '10 (Photo by Doug Plummer). Top right: 2008 Distinguished Alumnus Herb Tsuchiya, '55 (Photo by Team Photogenic). Lower right: Dean Thomas A. Baillie at the 2009 Dean's Reception (Team Photogenic). Lower left: From left: Jennifer Beach (Grimm), '01, Brian Beach, '00, and Kayla Kosel, '96 (Team Photogenic).



Recognizing Our Donors

We gratefully acknowledge the many generous alumni, faculty, staff, students, corporations, foundations and friends that made gifts and pledges to our School between July 1, 2008, and June 30, 2009.

CORPORATIONS & FOUNDATIONS

\$50,000+

Abbott Laboratories
Allergan Inc.
Amgen Corp.
Dana-Farber Cancer Institute
Eli Lilly & Co.
Fred Hutchinson Cancer Research Center
Genentech Inc.
M. J. Murdock Charitable Trust
Novartis Pharmaceuticals Corp.

\$25,000 - \$49,999

Eli Lilly & Co. Foundation

\$10,000 - \$24,999

American Association of Colleges of Pharmacy
Foundation for Managed Care Pharmacy
mSPEC Inc.
Overlake Hospital Medical Center
The Kroger Company
Walgreen Co.

\$5,000 - \$9,999

Alexis De Tocqueville Phil. Fund
Amgen Foundation Inc.
Bi-Mart
Fred Meyer Inc.
GlaxoSmithKline Foundation
Medco Health Solutions Inc.
Quality Food Centers Inc.
Seattle Children's Hospital
Tethys Bioscience Inc.
United Way of Snohomish County
Woodinville Medical Center Pharmacy Inc.

Less than \$5,000

Abbott Laboratories Fund
Barry Lafferty's Prescription Pharmacy
The Bartell Drug Company
The Boeing Company
Bristol-Myers Squibb Co.
Bristol-Myers Squibb Foundation
Community Health Center of Snohomish County
Garfield Medical Square Pharmacy
GE Healthcare
George F. Lund Trust
Good Samaritan Hospital
Haggen Top Food & Drug

Hall's Drug Center Inc.
Hong Kong Hospital Authority
International Society for Pharmacoeconomics & Outcomes Research
J & J Pharmacy
J C' S True Care Pharmacy Inc.
Jawa Enterprises
Jones Pharmacy
Kelley-Ross & Associates Inc.
Kindred Hospital
Lincoln Pharmacy
Macy's Foundation
Merck Partnership For Giving
Microsoft Corp.
Myrtle Warneke Education Foundation
NACDS Foundation
Northshore Scholarship Foundation
Pfizer Foundation Inc.
Pharmaceutical Systems Inc.

Pharmacists Mutual Insurance Co.
Regence BlueShield
Rite Aid Headquarters Corp.
Safeway Inc.
Samaritan Pacific Communities Hospital
The Sanofi-Aventis Group
Seattle King County Public Health
State of Washington
SuperValu Foundation
Swedish Medical Center
Target Stores
The Seattle Foundation
Twin Harbor Drug Inc.
Wal-Mart Stores Inc.
Walter & Hazel Hinman Foundation
Washington State Pharmacy Association
Washington State Pharmacy Foundation
Wells Fargo Foundation

INDIVIDUALS

\$10,000+

Geraldine Brady
Michael & Margaret Faulkner
Florence Gibaldi
Lars Hennum
Michael & Rosa Hoagland
Johnny Sze Lau
Joy Plein

\$5,000 - \$9,999

Kathleen & Thomas Baillie
Robert Eng
Donna & Michael Fey
Jacqueline Gardner & Gary Elmer
Mark & Pamela Holzemer
Sidney & Joan Nelson
David & Peggy Odegard
Lance & Sheila Pohl
Shannon Stewart & Allan Rettie
Stephen Toon

Class of 2010 Makes Its Mark

"Throughout our time as students, gifts from alumni and friends have provided us with countless opportunities. Whether we knew it or not, these gifts have been helping enhance our educational, research, outreach and practice experiences.

We would like to show our gratitude to the donors who have helped us along the way. What better way to thank them for their investment in us than to embrace their spirit of giving?"

So wrote a group of fourth-year students in a recent letter to their classmates announcing the launch of the School of Pharmacy P-4 Campaign. They launched this campaign to create a gift to the School from the Class of 2010.

The goal of the P-4 Campaign is for every member of the Class of 2010 to participate. Regardless of the amount the students can give, what matters most in this campaign is that they show their commitment to supporting the School.

So far, the students are off to a fantastic start in demonstrating that commitment. At the campaign kick-off in May, more than 40 percent of the class made a gift.

To date, nearly 60 percent of the class has participated.

The Class of 2010 gift scholarship will be presented to Dean Baillie at the graduation ceremony next June. If the student coordinators have their way, the class will continue giving to the fund long after graduation — perhaps enabling them to one day raise enough money to present an annual endowed scholarship.

The P-4 Campaign gift fund honors Michaelene Kedzierski, clinical professor of pharmacy and associate director of counseling services in the Office of Academic and Student Programs. The Michaelene Kedzierski Pharmacy Service Excellence



Michaelene Kedzierski

Fund will recognize a student who has demonstrated commitment to the pharmacy profession through service to the school, community and/or pharmacy profession. To make a gift, please visit depts.washington.edu/pha/p4giving.

President's Club (\$2,000 - \$4,999)

Evelyn Arrigoni
Ernest & Joanne Bush
Weichao & Sandy Chen
Donald & Donna Dockter
Christopher & Maureen Endres
Elva Gao
John & Megan Gibbs
Sandra Gonzales
Mitchell & Mandy Higashi
Rodney Ho & Lily Hwang-Ho
Bradley Kerr & Caroline Lee
Kevin Koch & Kathleen Maloney
Mary & Paul Kuehn
Stephen & Kathy Kushner
RoseAnn Kushner & Mark
Holodniy
Virginia Leland
Robert Lohr
Nanci & Robert Murphy
Patrick & Missy O'Donnell
Jack & Maxine Orr
Jack & Carol Stafford
Sean & Catrena Sullivan
Matthew Thomlinson & Dana
Hurley
Kenneth & Peggy Thummel
Chris & Gail Whitley
Edward Wong & Kathleen Price

Insider's Club (\$1,000 - \$1,999)

Kimberly Adkison
Arnold & Gail Anderson
Richard & Teresa Austin
Paul & Audrey Beaumier
Ronald & Kathleen Beil
Herbert Bridge
James & Barbara Cammack
James & Karan Dawson
Donald & Anne Downing
Louis & Frances Garrison
David & Christine Gross
Keli & Ryan Hansen
Kirk Henne
Albert &Carolynn James
Beverly Katterman
Cherie & Ronald Klein
Allen Lai
Annie & Arthur Lam
Todd & Amy Lee
John Lermusik
Rene & Beloria Levy
Albert & Sheila Linggi
Richard & Margaret Marshall
Malcolm & Diane McCallum
Donavon & Nicole McConn
Douglas & Areatha Mendenhall
Michael Mohutsky
David Nelson
Thanh Nguyen
Larry & Ellen Oliver
Marla & Patrick Osinski

Gregory & Gloria Pollock
Richard & Jane Ramsey
Lisa & Richard Reis
James Robbers
Danny & Barbara Shen
Shabir & Salma Somani
Bettie Tomchalk
Donald & Arda Williams
Helen Winter
Bradley Wong

Dean's Club (\$500 - \$999)

Glenn & Cheryl Adams
Lorraine Alonzo
Leon Alzola
Evon Anukam
Jack Babcock
George Benson, Jr.
Donald & Jeanine Bradley
George Brandt
Cindy Bueler

Brenda & Jess Kelly
Evan Kharasch
Margery Lillibridge
Phillip & Sandra Nudelman
Linda Peterson
Dominic Poon
Susan & Russell Purvis
Luis Ramos
Ellen Rhinard
Peter Salagianis
Robert & Martha Satterthwaite
Harry Schnepf & Cameron
Fosterling
Connie Shafer
Donald Shaw
Virgil & Carole Sheppard
Dennis Shibata
Nicholas & Joan Skalabrin
Joe Smith
Ronald Spring
Andreas & JoAnn Stergachis
Theodore Taniguchi

Susan Boyer
Aimee Breitfelder
Susan Bridwell
William Briggs
Stephen Bristow
Kenneth Brock
Richard Bulpin
Peter & Kathryn Caldwell
Dianne Calkins
Bonnie Campbell
Gail Campbell
Juan & Rosario Cantu
Lee & Marla Carey
Carol & Lloyd Carnahan
Marshall & Caroline Chalverus
Tai Chiem
Peter & Sylvia Chin
Steve & Grace Chin
Lisa Choe
Jennifer Chow
Judith & Barry Christensen
Richard & Susan Coar
Jonette Coats
Collin Conway
Diane & Terry Crutchfield
Karen & Timothy De Lacy
Kristin Deaver
Stephanie Decker
Sandra Demarest
Quy Dinh
Penni Dixon
Jennie Do
Tamara Duemmer
Robert Durbin
Gail Egerton-Caballes
Jon Eisenberg & Soraya Madani
Patrick Emerson
Jerry Eng
Steven Erickson
Michael & Susan Estep
Philip & Laurie Fergusson
Steven Fijalka
Madeleine Fry
John Fulton
Donna Galutia
John Galvin & Nancy Allison
Gloria Germa
Marvin & Helene Gersten
Morris Gjessing
Miriam Goldberg
Martha Gould
Ivars & Inese Graudins
Kenneth Green
George Guenther
Sandra Hagan
John & Carol Hagiwara
Warren & Ruth Hall
Wendy Hamamoto
Robert & Kathleen Hamilton
Tanya & Michael Hamilton
Jean Hamlin
William & Trudy Hamry
Anthony & Linda Haralson
Michael & Mary Harding



Ronald Caldwell
Timothy Carlson & Luann Aki
Kenneth & Irene Chan
Geoffrey & Cheryllynn Cheng
Janet & William Corrison
Wanda Crow
Bonnie & Walter Davison
Emily Devine
Carol Edmiston & Paul Sakai
Gregory Edmiston & Debra Leith
Kenneth Euler
William & Sharon Fassett
Stuart & Renee Feldman
William & Elizabeth Fisher
Timothy Fuller
William & Jane Garland
Joel & Dana Hadfield
Thomas Hazlet
Scott & Sarah Herzog
Paul & Chana Hiranaka
Cheryl & Reed Hisamoto
John & Maureen Horn
Kay Houghton
Gayle Hudgins
Alain Huitric
James & Sally Jacob

Arvind Thakkar
Mark Tirmenstein
Paul Tom
William & Caryl Trager
Victor & Ann Warner
Joann Warren
Cheryl Wright-Wilson &
Raymond Wilson
Ai-Ming Yu & Liping Chen

\$100 - \$499

Carlyn Adams
Katherine & Neal Akamine
Susan Amott
Jennifer & Michael Arnold
Tabitha Autele
Darlene & Ronald Baete
William & Janyne Barnes
Alan & Sheri Barronian
Robin & John Becker
Rhonda & Gustav Bekker
John & Sharon Bennett
Jill & Scott Bevans
Sharon & John Billdt
Gary & Sophia Bogh
Michael Bonck



Showcase: Natural Products Faculty Fund

Specialized funds created by alumni and friends allow the School to support everything from dual-degree students to cardiovascular pharmacotherapy research. The impact of these gifts can be extensive.

Take, for example, the Natural Products Faculty Fund. Generously supported by Geraldine “Geri” Brady, widow of former faculty member Dr. Lynn R. Brady, it funds faculty and research initiatives focused on drug and herbal interactions.

At present, the Natural Products Faculty Fund supports research related to the study of the drug artemisinin, which is purified from the plant *Artemisia annua*.

“This drug is the current standard of care throughout the world to treat malaria,” said Byron Gallis, medicinal chemistry research scientist and fund recipient. Beyond that, “artemisinin also has anti-cancer properties that allow it to selectively kill human cancer cells in culture and suppress tumor growth and size in animal models of cancer.”

Gallis’s research group is conducting research into artemisinin’s cancer-fighting capabilities, specifically with regard to non-Hodgkins lymphoma. Under the leadership of Dr. Tomi Sasaki from the UW Department of Chemistry, the team recently submitted two grant applications for projects to help them better understand how artemisinin blocks cancer cell growth. Without the seed money from



Artemisia annua (Courtesy of U.S. Department of Agriculture)

the Natural Products Faculty Fund, this team would not have had the resources to conduct the research required for their applications.

This is the kind of research Lynn Brady dedicated his career to — enhancing scientific understanding of natural products and drug interactions to improve public health. He completed his Ph.D. at the UW and was an assistant professor and professor of pharmacognosy throughout the 1950s and ’60s. He also served as the director of the Medicinal Herb Garden, among other leadership roles he held.

Today, thanks to Geri Brady’s passion to keep her husband’s research area alive, School scientists have more resources to better understand medicines derived from natural sources. The need for such research will only continue to grow as more Americans turn to natural products to improve their health — or in some cases, even to fight cancer.

*To make a gift to the **Natural Products Faculty Fund** or the **Lynn R. Brady Endowed Scholarship Fund** — a fund created to reward and support an academically talented pharmacy student — visit www.pharmacy.washington.edu/support or contact the School of Pharmacy Office of Advancement at (206) 616-3217, rxgiving@uw.edu.*

John Harrelson & Shiela Lesh
Gary & Carrol Harris
Richard Hart
Sallie Hartnett
William Hayton
Mary & Scott Hensel
Megan & Michael Hiraec
Vivian & Jeffrey Hiroo
Han Ho & Ivane Tay
Carmen Holcomb
Michael Hougen
Beth Houghton
Robert Hoxsey
William & Cynthia Hudson
Anna & James Huffman
Marie Ann Hwang
Sovanny Ing
Greg & Lea Inoue
William & Colleen Jackman
Jane & Marcus Jacobson
Richard & Joan James
Dena & Chad Jensen
Craig & Tina Johnson
David & Becky Johnson
Esther Johnson
Daniel Jones
Jack Jones

Thomas & Christine Jones
Pamela Joplin
Lynn Jorgensen-Benefiel
Kathleen Kaa
Sharla Keeling
Angela Kimball
Matthew Kimball
Nancy & John Kloster
Wilfred & Ruth Knight
Karen & Steven Knudson
Alla Komissarchik
Donna Kranig-Brown
James & Christine Krell
Cory Kringlen & Benjamin Davis
Edward Krupski
Alvin & Verla Kwiram
Karl Kwok
Linda & James Lang
Terry & Betty Lauritzen
Mai Le
Robert LeRoy
Anthony & Betty L’Esperance
Michael Liao
Donald Lim & Eileen Wood-Lim
Michael Lindgren
Casey Lirot
Mai & Ho Lo

Alan & Marlene Lomax
Alice Louie
Ya-Ching Lu
Mabel Lum
George Lund
Joni Maeda
Denise & Daniel Main
Daniel & Rebecca Malone
Punit & Hemant Marathe
Yvonne Mark
Debra Marshall
Helen Marshall
Harold & Virginia McBride
Jean McLauchlan
Richard & Kathleen McPoland
Joette Meyer
Donna Miles
Lois & Donald Miles
Elmer Miller
Nicole Miller
Ronald Miller & Kathleen Thayer
Danielle & Chad Mittleider
Henry Miyoshi
Allan & Ronalee Mizoguchi
John & Kathleen Moore
Malcolm Morris
Richard & Merideth Nelson

John Oftebro
Ryan Oftebro
Thomas O’Leary
James Omichinski
Thomas & Sharon Ormiston
John & Janice Osborn
Kenneth Paskett
Nancy Pendergraft
Lindsey Pinger
Diana Pone
Kimi & Greg Pontoppidan
Gerold & Billie Popovice
Gwen & David Powers
Patricia & Randy Rantz
Eric Reed
Shelby Reed
Thomas & Debra Rimar
Ronald & Jeanette Roffler
Barbara Rohde
Susan Miriam & Thomas Rowe
Amy & Kevin Roy
Debra & Richard Rucker
William Sandal
Tami & John Sargent
Sean & Amy Sauter
Janet & Gregg Schade
Richard Scheel

Tracey Schmaltz
 Steven Schold
 Lori Schoonover
 Joyce & George Schroeder
 Jeffrey & Kristin Schutt
 Catrina Schwartz
 Kathy Scott
 Annette Siegel
 Alexa Sin
 Ajay Sinha
 Robert & Patricia Slagle
 Vandana & J. Greg Slatter
 Dennis Smith
 Gary Smith
 William Speir
 Florence Squier
 Georgia & Kevin Steenis
 James & Angela Stewart
 William Stewart
 Roy & Bev Stippich
 Michael Strainer
 Jeremiah & Yolande Sullivan
 John & Claudia Swenson
 Leonard & LaVerne Talbott
 Gordon & Jennie Tambellini
 Emiko Taniguchi
 Joseph & Renee Tichy
 Janet Tjarnberg
 Harry Togesen
 Suzanne Trimmer
 Herbert Tsuchiya
 Lanning Turay
 Frantisek Turecek
 Samuel & Alice Uyeda
 Peggy Van Buskirk
 Cathryn & Kenneth Vannice
 Richard Vertz
 Elisa Vila & Mark Brady
 Quang Vu
 John & Wanda Watkins
 Jennifer Weber
 Judith Weber
 Bruce & Kathleen Webster
 Dennis & Joanne Weller
 Russell & Constance Wells
 John Wenala
 Paul & Lenore Werner
 Claude Wetzel
 Nancy Whiting
 Heather & Hilary Williams
 Judy & Fred Williams
 Susan Williams
 John Wilson
 Mary & Carl Wingate
 Donald Witek & Elizabeth Rice
 Kathleen Wolf & Philip
 Blumhagen
 Candice Wong
 Jan Yamaguchi
 Dennis Yamamoto & Kathryn
 McDonough
 Reid & Stephanie Yamamoto
 Herbert Yellin
 Melinda Young

Marcia & Rex Zeebuyth
 Cheryl Zimmerman

Less than \$100
 Lisa Ableidinger
 Laurie Adams
 Cindy Ager
 Sean Akamine
 Dele Akao
 Ardyth & Ralph Alexander
 Syed Ali
 Clyde & Kathleen Allen
 Antonio Anderson
 Carmela Andrada
 Esperanza & Manuel Andrada
 Lorraine Arakaki
 Julius Arinzech
 Katheren Armatas
 Marilyn Arnett
 Mariska Audriani
 Shawna Austin
 George & Eleanora Ballasiotes
 Gerald Barker
 Hope Barnes
 Charles Barton
 Yvonne Bates
 Ryan Bolonesi
 Cornelius & Catherine Borman
 Lawrence & Leslie Brenaman
 John Brewer
 Stella Britt
 Cynthia Brocklebank
 Adam Brothers
 Todd Brown
 Megan Buchanan
 Maria Burke
 Brenda & Jon Butler
 James & Ellen Carlson
 Joan & Judson Cates
 Chih-Hui Chen
 Sandra Chiang
 Phat Chiem
 Paul Choi
 David & Jessica Chow
 P. Susan & Kenneth Clark
 Larry & Cheryl Cleveland
 Anubha Cook
 Lawrence Corbin
 Margaret & John Corey
 Ralph Cornwall
 Ruth Cornwall
 Fred Cowan
 David & Carol Cross
 Victor & Sheri Curtis
 Sidney Cutler
 Charles & Linda Dahl
 Clyde Dahlin
 Eleanor Davidson
 Hawkins & Melissa Defrance
 Jerome & Maritza DeGagne
 G. Robert & Jaculin DeYoung
 Kimberly & Robert Dimino
 Brenda DiPrete
 Nicholas Dire

Scholarships Change Lives

Many students would not be able to graduate without the help of scholarship support. The following funds help pharmacy students reach their goals:

Adam Christopher Hansen Scholarship
 Bill & Caryl Trager Medicinal Chemistry Travel Award
 Center for Pharmacy Leadership & Professional Excellence Fund
 Class of 1969 Scholarship
 Craig & Sally Kvam Scholarship in Pharmaceutical Compounding
 Danny Shen Graduate Award
 Dawson Encouragement Fund
 Dean's Fund for Excellence in Pharmacy
 Doug Black Pharm.D. Award
 Drug Metabolism Fellowship
 Eli Lilly & Company Fellowship in Pharmacy
 Elmer M. & Joy B. Plein Endowment for Excellence in Pharmacy Education
 George & Evelyn Benson "Golden Pharmacists" Fund
 Graduate Fellowship Support Fund
 Herbert & Bertha Tsuchiya Student Support Fund For Global Research
 Hinman Foundation Scholarship Fund
 Hope Barnes Fellowship Fund
 Joan Douget Scholarship
 Lam Fund for Professional Advancement
 Leo A. Kushner Fund
 Levy Graduate Fellowship
 Lynn R. Brady Scholarship Fund
 Margaret Davis Graduate Fellowship in Drug Metabolism
 Margaret R. Davis Medicinal Chemistry Graduate Student Award
 Medicinal Chemistry Graduate Support Fund
 Muriel C. Vincent Scholarship Fund
 Nanci Murphy & Karan Dawson Fund for Pharmacy Leadership & Professional Excellence
 Pharmaceutical Outcomes Research Fund
 Pharmaceutics Fellowship Fund
 Pharmacy Graduate Support Fund
 Pharmacy Scholarship Support Fund
 Pharmacy Student Services
 Plein Endowment for Pharmacotherapy
 Rettie Graduate Fellowship
 Rodney J.Y. Ho Student Fund
 Sid & Joan Nelson Endowment for Excellence
 Somani Endowment Fund
 The Claire G. & Lars A. Henum Scholarship for Pharmacy Leadership
 The L. D. & Jim L. Bracken Scholarship Fund
 The Michaelene (Micki) Kedzierski Pharmacy Service Excellence Fund
 The William E. Bradley Fellowship in Pharmaceutics
 Thomas A. & Kathleen M. Baillie Fund
 Washington State Pharmacy Association Scholarship Fund



James Doll
 Mark & Pamela Dudgeon
 Jill & Derrick Dunmore
 Viola Dwight
 Claudia Ebsworth & Blaine McCoy
 Charles Edeen
 Harold & Diane Eiesland
 Ralda & Ziad Elias
 Leslie Ellis
 Manuel Esteban
 Ralph & Diane Estep
 Charles Fann
 Betsy Faulkner
 Jennifer Fidler
 Danielle Fonceca
 George & Sophia Fonti
 Leslie Foote
 John Forrester
 Rachael Forster
 Jill Fraley
 Armine Frangulyan-Adamov
 Lola Frederick
 Raymond & Lois French
 Ronald & Karla Frey
 Abby Frye
 Elizabeth & Anthony Fuchs
 Myrvie Fuentes
 Jason Furbush
 Susan Galbraith
 Dorothy Garrison
 Dianna Gatto
 Frances Gilbert
 Darla Gonzalez
 Robert Graham
 Hannah Greendorfer
 Suzanne & James Grigg
 Katryn Hammer
 Melanie Harper
 Charles Harris
 Sharon Hawkinson
 Naomi Hayashi
 Kenneth Hedden
 Brian & Linda Heenev
 Lewis Heffron
 Jennifer Heilman
 Elizabeth Hetrick
 Ellen Hoy
 Martin Hubbard
 Sophia & John Humphreys
 Philip Huynh
 Dawn & Michael Ipsen
 David Jaskar & Maria McCabe
 Charles Jensen
 Lance & Michelle Jobe
 Gerald Johnson
 Shirley Johnson
 William & Kathryn Jolly
 Russell Kasselmann
 Helen & Richard Kay
 Linda Kelley
 Misty Kelley
 Marlin & Kathleen Kelly
 Robert Kemmer

Eileen Kempton
 John Kennedy
 Jae & Tory Kim
 Cathleen Kiyota
 Jennifer Knutson
 Gregory Kozak
 Jennifer Kreidler-Moss & Mark Moss
 Judith Kronick
 Roy Kurimura
 Dmitriy Kurkov
 Diana Kusulos
 Shannon & Robert Lahn
 Francine Lai
 Angela Lam
 Linda Lawless
 Jay Lawrence
 Hieu Le
 Randall & Lori Legg
 Lawrence & Beverly Lemchen
 Darr Lenderman
 Amie Lenzi
 Yvonne Lin
 Stephen Lincoln
 Mary & Stephen Lindberg
 Warren & Carol Lindblad
 Marty & Katharine Lindemann
 Helen Loennig
 Jeanne Long
 Keith & Mary Lucey
 Nancy Maben
 William & Mayumi MacDonald
 Jill Mack
 Vincenza Maniscalco
 Marcus Manson
 Sue Mark
 Susan & Daniel Martell
 Douglas Mason & Patricia Stewart
 Thomas McArthur
 Darrell McFarlane
 Vicky McFarlane
 Frances McGaugh
 Elena Meeker
 Don & Janet Mehaffey
 Mark Mercado
 Joe & Elizabeth Miles
 Sheree Miller & Benjamin Greer
 Traci & Tim Mitchell
 Anne Mock
 Katharine Monaco
 Richard & Shari Morrison
 JoVanna Moses
 Steven Moss
 Valerie Moua
 Satya Murthy
 Joseph Ness
 Duc & Hang Nguyen
 David Nilson
 Tess Nishida
 Debbie Noeske
 Christopher Nomura
 Rachel Nowak
 Stuart & Lisa O'brochta
 Kenneth & Donna Olsen

Edward Osei
 Warren & Jana Ostrom
 John Ott
 Gerald & Janet Padgett
 Mary Paine
 David Palumbo
 Mayleen Panaligan
 Madhumitha Panchapgesan
 Gina Park
 Norman & Rhalene Patajo
 Beverly Patzer
 Craig Pedersen
 Deborah & Mark Petersen
 Kristopher Petersen
 Vinh Phan
 Kelly Philopant
 Lillian Plut
 Robert Plut
 William Porter
 Jake Purvis
 James Ramseath
 Michael Raymond
 Julie & John Ridewood
 Lyle Ried
 Margaret Ritchie
 Ann & Arnold Rivenes
 Carol & Carl Robertson
 Mark & Christine Rock
 Rhonda Roedler
 Myrna & Marvin Romack
 Mary-Pat & Nick Rondinelli
 Melissa Rozdilsky
 Kimberli Ruiz
 David Russell
 Terry Seaton
 Bharti Sharma
 Redmond & K. Gayle Sharp
 Mary Shigaya
 Mark & Gwen Shighihara
 Hyun Shin
 Victoria Shum
 Frederick Simons
 Daniel Smith
 Ellen Smith
 Michael Smith
 Melinda Soriano
 Richard & Cheryl Stemerick
 John & Elizabeth Stillings
 Bonnie & Alan Stone
 Betty & Joseph Sullivan
 Donna Sullivan
 Florence Sumida
 Timothy Sweeney
 Arthur Takeda
 Lynda Tanagi
 Judi Tawney
 Brock Taylor
 Thomas Tennant
 Joel Thome
 Juli & Wesley Thompson
 Nancy Thurmond
 Marilyn & Howard Toda
 Janet Topasna
 Ted & Christine Toribara

Thomas Torres
 Ann Tran & Joseph Hendricks
 Valerie Tran
 Lillieth Truemper
 Catherine Ulep
 Laura Ullery
 Carolyn Uyeda
 Arie Van Wingerden
 Jeffrey Vogan
 Jeffrey Walker
 Elizabeth Warren
 Louise Warren
 Charles Wassberg
 Richard Weber
 Phyllis Wene
 Jonathon & Carol West
 Ann & Craig Wilbour
 Richard Williamson
 Shea Wilson
 Wendy Wong
 Sharon & Daniel Woodward
 Ronald Wright
 Christina Wu
 Andrew Yafuso
 Jenni Yea
 Nina Yee
 James Youngquist
 Hae Zhang
 Susan Zwiers



Every effort has been made to represent the names of our donors accurately. We apologize for any errors or omissions. For more information about giving to the School, or to correct your donor listing, please call or e-mail: Claire Forster, director of advancement & corporate relations, (206) 616-3217, cbrown@uw.edu.

Pharmacy Alumni and Friends: Out and About

Dean's Club Night at the Mariners



Members of the School of Pharmacy Dean's Club watched the Seattle Mariners beat the Tampa Bay Rays in an exciting overtime game in August. The Mariner Moose (and the sunshine) even made a special appearance.



ABOVE LEFT: Professor Emeritus Joy Plein and Don Dockter. **BELOW LEFT:** Anne Downing, Dean Emeritus Sid Nelson, '68, and Donna Dockter, '72. **RIGHT:** From left: Tim Douget, Rita McGough, Elva Gao, '07, and husband Song Xue.

E-mail your photos and captions from alumni events to: rxalumni@uw.edu

2009 Dean's Recognition Reception

More than 130 alumni, friends, faculty and staff of the School attended the Dean's Recognition Reception at the Seattle Asian Art Museum in May. The event honored the Distinguished Alumnus in Pharmacy Practice, Herb Tsuchiya, '55. (Read more about Tsuchiya at depts.washington.edu/pha/news-events/tsuchiya_bio.html). It also paid tribute to some of the School's most loyal supporters and volunteers.



View a slideshow of the reception at depts.washington.edu/pha/news-events/Recognition2009

LEFT: Distinguished alumnus Herb Tsuchiya, '55, with Dean Thomas A. Baillie. **ABOVE RIGHT:** From left: Professor of Pharmaceutics Rene Levy, Professor of Pharmacy Gail Anderson, '78, '87, Dean Emeritus Jack Orr, Professor of Pharmacology Frank Vincenzi, '60, '65, and Director of Advancement Claire Forster. **RIGHT:** Pharm.D. student Sean Akamine, '10.



All Dean's Recognition Reception photos by Team Photogenic ©2009

Northwest Pharmacy Convention

The annual Northwest Pharmacy Convention took place in Coeur d'Alene, Idaho, this past May. The University of Washington once again had a great showing of students, faculty and alumni at the event that attracts pharmacy leaders and practitioners from around the region.



BELOW LEFT: From left: Ryan Bolonesi, '10; Josh Welborn, '01, Karen Craddick, '12, and Heidi Welborn (Kidder), '03. **LEFT:** Our stand-in for the official UW Husky, "Dubs," made his appearance whenever WSU Cougars were around. **BELOW RIGHT:** From left: Pharm.D. students Karen Craddick, '12, Reid Inouye, '11, Nicole Campbell, '12, Sara McElroy, '12, and Sandra Chiang, '10.



Compounding New Solutions (Continued from front page)

because they were suffering from a rare fungal infection in the lung. Their physician hadn't found any treatment options that worked. So Kvam formulated an inhalation therapy with special antifungals. It worked.

"It's so gratifying to serve people with these kinds of health issues who are so desperate for help," said Kvam.

Indeed, his pharmacy has become an essential resource for many area physicians who find themselves stumped by such cases. As a result, Kvam has a closer and more collaborative working relationship with doctors than he had when he was a traditional pharmacist.

He also works closely with many local veterinarians. They turn to Poulsbo Pharmacy when they need compounds for medications that aren't available in certain dosages and combinations for animals. Sometimes, Kvam even creates compounded treats for pets that won't take their pills.

Although much of the public doesn't know this branch of pharmacy

exists, it has ancient roots. In more recent history, it was common in pharmacies until medications became mass-produced by manufacturers in the 1950s and '60s. While compounding pharmacies mostly disappeared during this time, the need for them did not. So the practice slowly worked its way back in the following decades.

"Compounding opened my eyes to the need for the kinds of pharmacy services that couldn't be done in traditional pharmacy."

By 1981, the Professional Compounding Centers of America (PCCA) formed, helping shepherd in a resurgence in the practice. In the past few years, demand has grown as more women have relied on compounding for hormone-replacement therapy.

Today, the International Academy of Compounding Pharmacists estimates that more than 2,000 U.S. phar-

macists and technicians focus solely on compounding. That doesn't include the countless traditional pharmacies that offer basic compounding services.

"Since I started in this industry, I've seen huge growth," said Kvam. "Things keep evolving in the right direction. The bar keeps getting higher."

In addition to acquiring all the standard pharmacist practice licenses, fully compounding pharmacists receive training through the PCCA and other compounding organizations. Further, they use specialized equipment and generally need bigger labs than traditional pharmacies.

Making the switch to a fully compounding pharmacy has been well worth the investment for Kvam. He loves the daily challenge and is grateful to work with people who are also passionate about compounding. He is also grateful to the School of Pharmacy.

"I could never repay the UW for the education it gave me and the chance to do this," he said. ☺

Class Notes

1960-1969



Duane Miller
(Team Photogenic)

Duane D. Miller, Ph.D., '69, received the Volwiler Research Achievement Award from the American Association of Colleges of Pharmacy for his outstanding research and contributions to pharmaceutical sciences.

1970-1979

Susan Teil Boyer, '72, was named new board executive director of the Washington State Board of Pharmacy. She previously served eight years as member and chair of the board from 2000-2008.

Dave Swenson, '76, is co-founder of IntelliDOT Corporation, a point-of-care patient safety solution for acute care hospitals. He currently works as chief clinical officer and was the primary architect of IntelliDOT's product design. He was previously one of the original staff members of Pyxis Corporation. He lives in San Diego with his wife, Lynn.

Rod Shafer, '77, was named

the new executive vice president of the International Academy of Compounding Pharmacists in April. Shafer was previously the CEO of the Washington State Pharmacy Association.

1990-1999

Charlotte Pendergast, '96, received a One-to-One Patient Counseling Recognition Award from the American Pharmacy Association. Pendergast is a pharmacist at Walgreens in Sierra Vista, Ariz. She previously worked as a buyer for the Bartell Drug Co. and is a lifetime member of Lambda Kappa Sigma.

2000-present

Marci Reynolds (Martin), '04, and her husband, Jesse Reynolds, welcomed their second son, Josiah Martin Reynolds, on January 7th, 2009. Their first son, Hudson, turned two in July. After the birth of her first son, Marci stepped down as director of pharmacy for QFC and started working part-time as the department's clinical care coordinator.

Emily Schulze, '09, and **Patricia "Petey" Sonnett, '09**, received Alumni

Professional Excellence Awards from the UW Pharmacy Alumni Association. The awards recognize graduating students who have demonstrated outstanding potential for contributions in pharmacy through aptitude and accomplishments.

Jenny Arnold (Riddell), '06, recently became the director of pharmacy practice development at the Washington State Pharmacy Association.

Shelby Reed, former postdoctoral fellow in the Pharmaceutical Outcomes Research and Policy Program, was recently elected to serve a two-year term on the International Society for Pharmacoeconomics and Outcomes Research Board of Directors.

We want to hear from you. Let us know what's new in your life. Please e-mail us with your updates at rxalumni@uw.edu.



Emily Schulze and
Petey Sonnett
(Team Photogenic)

Practice Advisory Board to Help Guide School

The School of Pharmacy is pleased to announce the official formation of its Pharmacy Practice Advisory Board.

"This board," said Dean Thomas A. Baillie, "will help us achieve our vision and educational initiatives in pharmacy practice. It has been a long time coming and we are thrilled to be moving forward with this effort."

Formed earlier this year, the board will provide a link between the School's professional pharmacy program and the pharmacy and medical communities. Among the roles that the board will play will be to: advise the dean and faculty on key issues involving programs, research, teaching and patient care; assist in long-range planning; and help promote the discovery, development

and appropriate use of medications.

The members of the board are among the School's most engaged pharmacy practice volunteers.

"These people are dynamic practice leaders across pharmacy disciplines," said Don Downing, board chair and clinical professor of pharmacy. "They are all deeply committed to ensuring the success of the School and pharmacy practice. We are so grateful to be collaborating with such a stellar group."

The Pharmacy Practice Advisory Board will meet annually to discuss the School's activities, programs and pressing needs. It will complement the School's Corporate Advisory Board that provides guidance on research and graduate training programs. ☺

UW Pharmacy Practice Advisory Board Members

Chair: Don Downing, School of Pharmacy

Thomas Baillie, School of Pharmacy

Carol Carnahan, Bartell Drugs

Collin Conway, Group Health

Claire Forster, School of Pharmacy

Al Linggi, McKesson Corp.

Kelly Nelson, Target

Ryan Oftebro, Kelly-Ross Pharmacy

Charles Paulsen, Quality Food Centers Inc.

Jeff Rochon, Washington State

Pharmacy Association

David Rose, Healthpoint

Steve Singer, Bellegrove Pharmacy

Shabir Somani, UW Medical Center

David West, Swedish Hospital

Spotlight On: The DNA Sequencing and Gene Analysis Center

The human genome contains more than three billion combinations of DNA sequences. The School of Pharmacy's DNA Sequencing and Gene Analysis Center is helping researchers study them. In so doing, it's improving scientific understanding of how genes alter individual responses to drugs.

Housed in the Department of Pharmaceutics since 2003, the center provides services to investigators from the School of Pharmacy and other UW departments, including bioengineering, medicine and pathology.

The most common research interest for scientists who rely on the center relates to pharmacogenomics. For example, faculty from the Obstetric-Fetal Pharmacology Research Unit are currently relying on the center to study

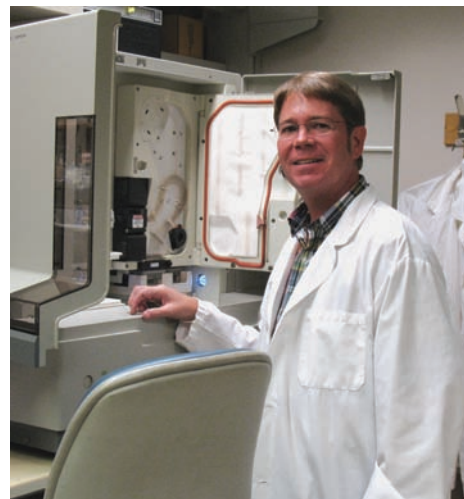
genetic variations in drug transporters and their role in pharmacokinetics of diabetes medications during pregnancy.

The center is also equipped with advanced instruments that provide high-throughput genotyping and gene-expression analysis.

Students in the School can receive training to learn how to use all the various instruments for their own studies and research.

What makes the work in the center exciting, said Ed Kelly, manager and acting assistant professor of pharmaceutics, is the context of the data.

"We work closely with the clients, so we know the details of each project. Thus, when the data comes in, we share in the excitement — or disappointment — of the final results." 🗣️



Manager and Acting Assistant Professor Ed Kelly shows off the DNA Sequencing and Gene Analysis Center's sequencing instrumentation.

Learn more about the DNA Sequencing and Gene Analysis Center at depts.washington.edu/pceut/pceut_services.

Breaking Down Complex Drug Has Rewards (Continued from Page 4)

scientific information about the drug's safety, efficacy and economic value compiled by the drug's manufacturer.

They supplemented this information by: searching medical literature for relevant articles; creating pharmacoeconomic models; and otherwise considering the drug's benefits and drawbacks from all possible angles.

At the national competition, the students gave a half-hour presentation

of their findings to a mock P&T committee and responded to detailed questions. The committee — which was also the judging panel — comprised three experts from various health plans.

"In the time that I've been watching this competition, I've never seen a team do better than this group," said Watkins, who has judged the competition in the past. He praised them for the extensive pharmacoeconomic mod-

els they built, their scientific knowledge, and their overall teamwork and presentation skills.

This was the first year the UW entered the competition. Nineteen teams originally applied to nationals after winning local chapter contests in January. Only eight teams made it to Orlando.

For winning first place, the students received a \$2,500 scholarship that will go to the School of Pharmacy. 🗣️

In Memoriam



Beverley Katterman, former co-owner of Montlake Drugs and Katterman's Sand Point Pharmacy and wife of the late Don B. Katterman, passed away in May.

The Katterman family's legacy to the UW School of Pharmacy lives on with the Annual Don B. Katterman Memorial Lecture, which celebrated its 30th anniversary this year. [Bev is pictured at left attending the 2009 lecture.]

Throughout their life together, Bev and her husband, Don, worked to keep their neighbor-

hood pharmacies thriving as central members of their communities. Bev also supported her husband's endeavors to improve pharmacy practice in Washington. He was a mentor to countless pharmacy students, a UW Pharmacy Alumni Association president and a Washington State Pharmacy Association president.

She herself was active in many service organizations, including the Children's Orthopedic Hospital Guild and the Women's Pharmacy Group.

Professor and Chair Emeritus Bill Trager Remembers Alain Huitric



1967 School of Pharmacy faculty photo of Dr. Alain Huitric

Alain Huitric, professor emeritus of medicinal chemistry, passed away in late July at his home in Brittany, France.

Al was born in 1912 in Sainte Rose du Lac in Manitoba, Canada. In his teens, he and his family immigrated and took up residence in Los Angeles.

He served in the U.S. Navy during World War II. Upon his discharge, he obtained his bachelor of science in chemistry from the University of San Francisco and his Ph.D. in medicinal chemistry from the University of California, San Francisco.

Al joined the faculty of the School of Pharmacy in 1955 where he remained for the rest of his career, retiring in 1978. He was the first School faculty member to secure National Institutes of Health funding for research programs.

In the late 1950s and early 1960s, nuclear magnetic resonance was in its infancy. Al recognized its potential for solving thorny problems of structural organic chemistry, and it became the primary research tool in the dissertations of virtually all of his Ph.D. students. Training in this state-of-the-art technique opened doors for their career development.

A quiet and gentle man, he was foremost a man of

integrity. Al not only embodied the qualities of integrity — sound moral principles, honesty and sincerity — he exuded them. The power of his integrity commanded respect and had a profound influence on the lives of many, myself and Dean Emeritus Sid Nelson included.

Indeed, Dean Emeritus Nelson credits Al with inspiring him to pursue the path of teaching and research. He also says that, without Al's "gentle nudge and huge vote of confidence," he never could have become the dean of the School.

And so Al's legacy has been carried on through the many accomplishments of those of us who were his students. This also includes the president and CEO of a Fortune 500 chemical company as well as prominent researchers and professors at major universities. But perhaps most important, his legacy is carried on through so many other people whose lives have been enriched simply by having known him.

Al is survived by his wife, Simone. 🍷

Bill Trager received his Ph.D. in medicinal chemistry under the direction of Dr. Huitric at the UW in 1972. He is professor emeritus of medicinal chemistry in the School, and he served as department chair from 1980 to 1983.

Gifts can be made in Dr. Huitric's honor to the Dean's Fund for Excellence. To make a gift, visit www.pharmacy.washington.edu/support or contact the Office of Advancement at (206) 616-3217, rxgiving@uw.edu.



UW School of Pharmacy
Pharmacy Alumni Association
Box 354699
Seattle, WA 98195-4699

Nonprofit Organization
U.S. Postage
Paid
Seattle, WA
Permit #62

